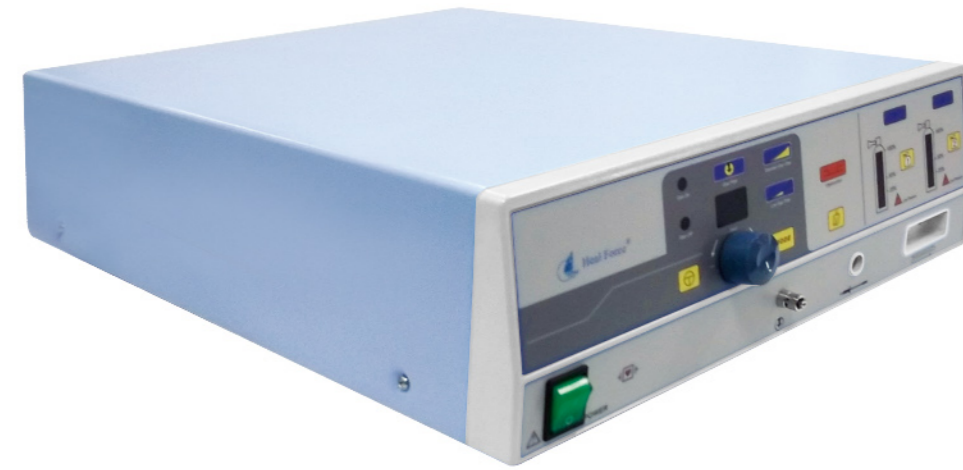
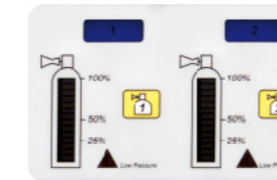


Electrosurgical generator
EB05 For standard and Argon-enhanced electrosurgery



Features

- Two gas tank connections
- Automatic tank switch with low pressure trigger
- Automatic hose-purge after changing tank and blockage detection
- Low argon flow (0.5~4 L/min) for endoscopic application
- High argon flow (0.5~12 L/min) for open surgery
- Gas failure alarm with audible and visual indication
- Intuitive error code display for troubleshooting



Argon tank monitoring and switch



High/low flow control

EB05-AR Argon plasma coagulation system

Why Argon-plasma spray?

- Non-flammable operation with lower burn risk
- Less surgical smoke allowing clear visibility into operating area
- No contact and adhesion to tissue
- Immediate and uniform hemostasis of large-area bleeding surface
- Thinner and flexible eschar for shorter recovery time and lower rebleeding risk
- Minimal risk of perforation with low penetration depth
(for surgery of parenchymatous organs like liver, kidney and spleen)
- Particular advantage for endoscopic and open surgical procedures



Argon coagulation

Specification

General	
Dimension (WxDxH)	555x410x155 mm (L x W x H)
Weight	12.5 kg
Power supply	AC 220 VAC ±10% , 50HZ±2%
Temperature (Work/Storage)	+ 5~+40 °C / -40~+55 °C
Relative Humidity (Work/Storage)	≤ 80% / ≤ 95%
Atmospheric pressure (Work)	700~1060 hPa
Technical	
Low Argon flow	0.5~4 L/min ±15%
High Argon flow	0.5~12 L/min ±15%
Gas filtration	0.3 μm (internal) / 5 μm (external)

Optional accessories

Ordering No	Description
7SB-FQJ-001	Cable for connecting ESU and endoscope
7DJ-FP12-1	Argon plasma coagulation electrode
7WC-EB05YQ-LX	Cable for connecting Argon system to ESU
7JF-YQ-001	Pressure regulator for Argon tank
7DT-HP06-001	Electrosurgical handset (for Argon unit)



7SB-FQJ-001

7DJ-FP12-1



7WC-EB05YQ-LX



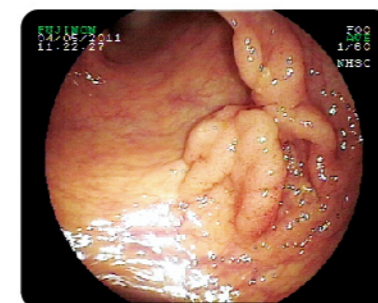
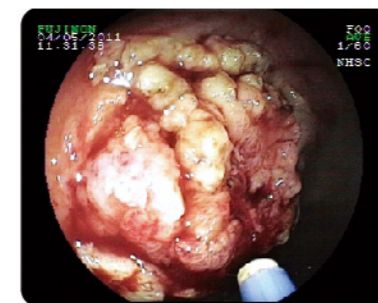
7JF-YQ-001



ARB01-10-00

Applications

General surgery	Superficial bleeding during
	Abdominal surgery
	Open liver surgery
Thoracic surgery	Heart surgery
	Surface haemorrhages
ENT surgery	Benign endobronchial tumors
	Stent ingrowth / overgrowth
	Superficial muscol resection
Tumor surgery	Subglottic and tracheal resection
	Nasal Cavity
	Advanced tumor resection
Gastroenterology	Benign or pre-cancerous lesions
	Bleeding during polypectomy resection
	Angiodysplastic gastrointestinal bleeding
	Colon carcinoma
	Erosions, ulcers, or oozing of blood
	Dieulafoy Lesion
Gynecology	Stenosing tumors
	Verrucous gastritis
	Myomectomy
	Endometriosis



Argon coagulation in gastroenterology



Heal Force Bio-Meditech Holdings Group
 6788 Songze Road, Qingpu District, Shanghai 201706, P.R. China
 Tel: +86 21 62728646, Email: export@healforce.com, Fax: +86 21 62710529

www.healforce.com

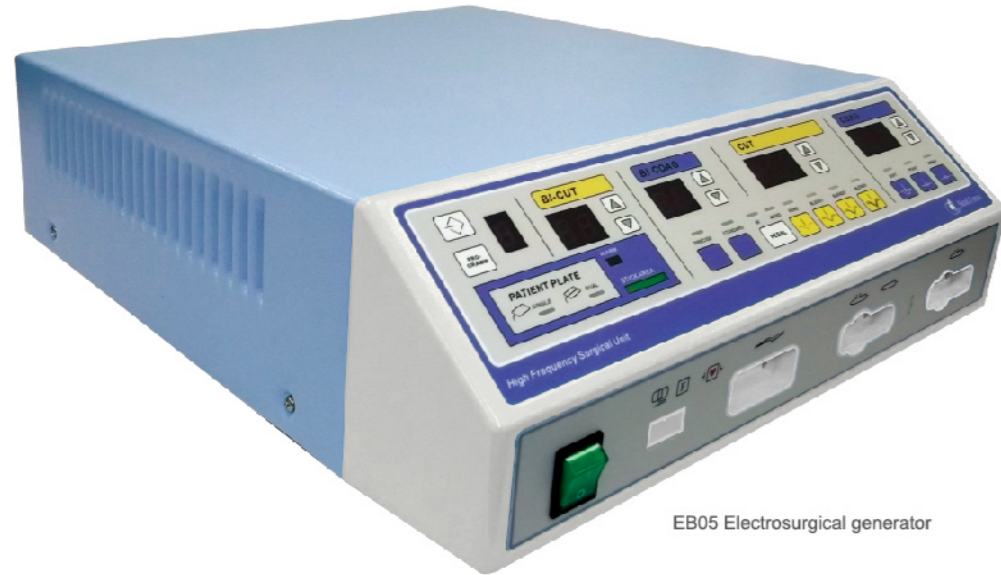
Information is subject to change and/or updating without notice



Product overview

EB05 is a versatile system designed to deliver standard and argon-enhanced electro-surgery.

It features 10 different power setting, 9-channel program memory, max.400 watt floating output and optional Argon-enhanced system to give optimal cutting and coagulation with minimal tissue damage, which well combines safety and effectiveness for a broad range of electro-surgical needs, like General surgery, Cardiology, ENT surgery, Gastroenterology, Gynaecology, Laparoscopy, Neuro surgery, Plastic surgery, Thoracic surgery and Urology (like TURP, TUVF).



EB05 Electro-surgical generator



Up to 9-channel setting memory for quick response to routine surgery



Optional Argon-plasma coagulation extension



Neutral electrode recognition & contact area monitoring and display

Features

- Microprocessor-controlled output by max. 400 watts (all floating)
- 7 Monopolar and 3 Bipolar power modes
- Automatic power adjustment and compensation for tissue variation
- Return electrode monitoring (REM) system
- 9-channel program memory
- Optional Argon system for enhanced electro-surgery
- TURP, TUVF capability
- Up to 3 different instruments can be configured simultaneously
- CE marked



For minimal access application

Technical specification

Monopolar				
Cutting mode	Max. power output (watts)	Load (ohms)	Open circuit Vp-p	Crest factor
Pure	400 watts	500 Ω	2,300 v	1.5
Blend1	300 watts	500 Ω	2,700 v	2.1
Blend2	200 watts	500 Ω	3,200 v	2.5
Blend3	150 watts	500 Ω	3,700 v	3.1
Coagulation mode				
Point	120 watts	500 Ω	5,600 v	6.1
Soft	120 watts	500 Ω	3,400 v	6.1
Spray	120 watts	500 Ω	8,500 v	8.3
Bipolar				
Cutting mode				
Standard	70 watts	200 Ω	1,450 v	1.5
Coagulation mode				
Standard	70 watts	500 Ω	240 v	1.5
Precise	70 watts	200 Ω	360 v	1.5

Other

Accessory & supply connection	
Finger-switch pencil	1
Foot-switch pencil	1
Patient return electrode	1
Foot-switch	1
AC power supply	1
Equipotential bonding	1

Power feature	
Rate frequency	512 kHz (110/240vAC,60/50Hz)
Isolated output	YES
Quantitative display of contact area	YES, for "Split" type of neutral electrode
Contact area indicator lamp	10 lamps (one for 10% contact), alarm beep and flicker if contact < 20%
Split/solid neutral electrode definition	YES, "Split" or "Solid" indicator lamp lights up
Adjustable alarm volume	YES
Operational duty cycle	10 seconds ON, 30 seconds OFF
Cooling method	Convection

Regulation	
Type according to EN 60601-1	CF
Protection class to EN 60601-1	class I
Classification acc.to MDD 93/42/EEC	IIb

Physical	
Dimension (WxDxH)	460 x 410 x 160 mm
Weight	11.2 kg

Standard accessories	
Foot-switch(dual)	1 pc
Foot-switch pencil, disposable	1 pc
Hand-switch pencil, disposable	1 pc
Patient return electrode without cable,Split, for adult,Disposable	1 pc
Patient return electrode without cable,Solid, for adult,Disposable	1 pc
Connecting cable for patient return electrode(Solid) ,3m,Reusable	1 pc
Connecting cable for patient return electrode(split) ,3m,Reusable	1 pc
Bipolar forceps (TIP 1mm / Size 200mm),bayonet-shaped, Reusable	1 pc
Connecting cable for bipolar forceps, Length 3m ,Reusable	1 pc

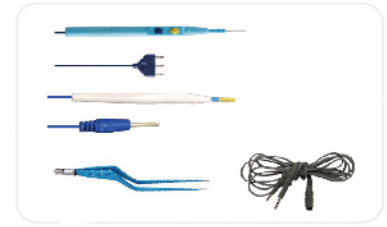
Optional electro-surgical Accessories

*All specifications and figures are subject to change without notice

* If the accessories you need are not listed here, please consult our international distributors or sales representatives

Pencil (or called electrode holder) and control

Ordering No	Description	Remark
MD1000	Hand-switch pencil	Disposable
MD1000-JK	Foot-switch pencil	Disposable
MD4000	Bipolar forceps(TIP 1mm/Size200mm), Bayonet-shaped	Reusable
MD4000-XC	Connecting cable for bipolar forceps, 3m	Reusable
7SB-JTKG-STB	Foot-witch for Foot-control pencil and Bipolar forceps	Reusable



Electrode

Ordering No	Description	Remark
MD100069	Standard Blade electrode, shaft 69mm, sterile	Disposable
MD100069E	Standard Needle electrode, shaft 69mm, sterile	Disposable
MD10005F	Standard Ball electrode (Φ5mm),shaft 69mm, sterile	Disposable
MD1000D	Extended blade electrode, shaft 150mm, sterile	Disposable
MD1000E	Extended needle electrode, shaft 150mm, sterile	Disposable
MD10005FL	Extended ball electrode (Φ5mm), shaft 150mm, sterile	Disposable
MD1000H	Square Loop electrode (10x10mm), 150mm, Sterile	Disposable
MD1000C	Semi-round Loop electrode (10x5mm), 150mm, Sterile	Disposable
MD10000C	Semi-round Loop electrode (10x10mm), 150mm, Sterile	Disposable
MD100010C	Semi-round Loop (15x10mm), 150mm, Sterile	Disposable
MD100015C	Semi-round Loop (15x15mm), 150mm, Sterile	Disposable
MD100020C	Semi-round Loop electrode (20x10mm), 150mm, Sterile	Disposable
MD100015A,17A,20A	Conization electrode 15*10mm(H*L), 17*12mm or 20*15mm, sterile	Disposable



Patient return electrode

Ordering No	Description	Remark
GP202D-A	Patient return electrode without cable,Solid, for adult	Disposable
GP202S-A	Patient return electrode without cable,Split, for adult	Disposable
GP202D-P	Patient return electrode without cable,Solid, for child	Disposable
GP202S-P	Patient return electrode without cable,Solid, for child	Disposable
MA2000	Cable for split return electrode, 3m	Reusable



Other accessories

Ordering No	Description	Remark
DDFJ-10-00	Adaptor for thick or thin pin-leg to electro-surgical unit,Φ7mm to Φ6.3mm	Reusable
DDFJ-20-00	Adaptor for thick or thin pin-leg to electro-surgical unit,Φ8.5mm to Φ6.3mm	Reusable
7SB-FQJ-001	Cable for laparoscope, D4(suitable for XEB02, EB03A, EB03, EB05)	Reusable
7BZ-ARTC-001	Mobile cart for EB05 electro-surgical unit	Reusable
7BZ-HFSUTC-001	Mobile cart for EB05 electro-surgical unit	Reusable

