

S•scan^{OPEN}

Open to the Future



esaote
HEALTH WITH CARE

S-scan Open, an evolution in diagnostic excellence

Starting from extensive customer feedback, research and development efforts, Esaote has specifically re-designed the **S-scan Open**, rooted in tradition to meet the demanding needs of any practice with a musculoskeletal workload.

Incorporating the latest Esaote MRI technology, in terms of software platform and design, **S-scan Open** is the perfect convergence of the most innovative Italian technology and a customer-driven MRI to serve users' need for diagnostic efficacy and cost per exam.

The **S-scan Open** innovates with every pulse and every beat guaranteeing uncompromised diagnostic quality with low operating costs.



Innovation through tradition

Esaote MRI systems are used daily in thousands of clinics and hospitals all over the world for routine clinical and diagnostic use in traumatology, orthopedy and sports medicine areas, as well as for ongoing medical research and meticulous scientific studies.

What characterizes the **S-scan Open** is its ease of use, thanks to the ergonomic design, the real-time image display and its very wide and asymmetric rotating table, which guarantees maximum stability and comfort in patient positioning, easy setup, and great images.

The open magnet design provides a more comfortable and claustrophobia-free MRI experience for all patients, including children.



Faster, better, more versatile

eXP Performance enhancements

By combining sophisticated acquisition and reconstruction methods such as SpeedUp and TR reduction, eXP will substantially improve the MRI examination by notably reducing scan times and improving image quality whilst limiting artifacts and background noise.



Increased productivity

Scan more patients per day.



Enhanced diagnostic

With the same protocol time:

- Increased image resolution.
- Extra sequences and more flexibility.



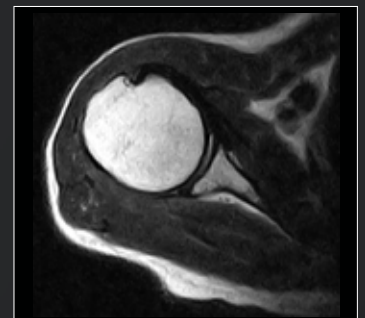
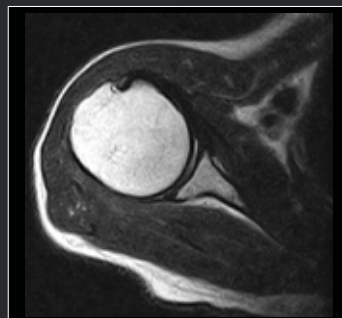
Improved patient experience

Reduced scan time means:

- More time for patient care and comfort.
- More time to clean and disinfect the system.



With eXP 32% faster



With eXP 28% faster



Res 0.56 x 0,78



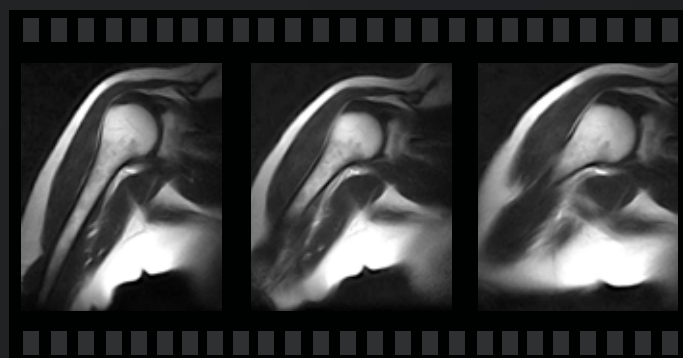
More resolution - Res 0.43 x 0,625

True-Motion, the power of dynamic imaging

It is possible to expand your clinical horizons by integrating your daily routine with dynamic sequences based on the patient's symptomatology, in order to get a specific and unique diagnosis.

With the implementation of True-Motion, and thanks to the open magnet design, **S-scan Open** allows the operator to perform MRI with patients performing specific joint movements, providing real-time information.

This procedure may be beneficial for pathologies that may not be visible with standard static examinations, adding value for post-operative analysis and relevance in the evaluation of clinical conditions for targeted and customized treatments.



Metal Artifact Reduction, Open to all

The population with metal implants is steadily growing and artifacts related to the presence of devices can negatively affect an adequate assessment of the pathologies. MAR (Metal Artifact Reduction) uses a sophisticated gradients management system to suppress or reduce inplane metal distortions ensuring excellent SNR and soft tissue integrity in areas close to metal devices.

With this feature, **S-scan Open** offers optimal image quality **examination for the entire population**, increasing diagnostic efficiency in the follow-up of all patients with clips and prostheses.



Consistent image quality

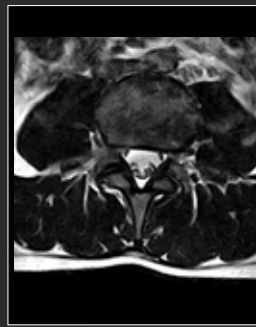
Designed on a renovated technological platform **S-scan Open** offers a superior image quality experience thanks to the application of new image enhancement profiles.



L-spine FSE T2 Sagittal



L-spine SE T1 Sagittal



L-spine 3D Hyce



Hand XBONE Coronal



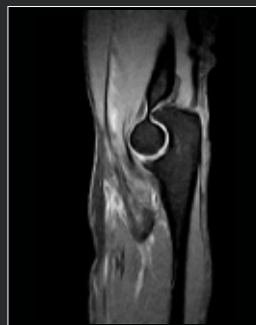
Wrist 3D SHARC Coronal



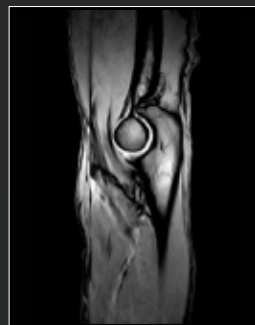
Wrist GE Coronal



Thumb 3D SST1 Sagittal



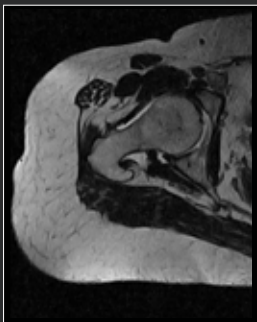
Elbow SPED Fat suppression Sagittal



Elbow GE Sagittal



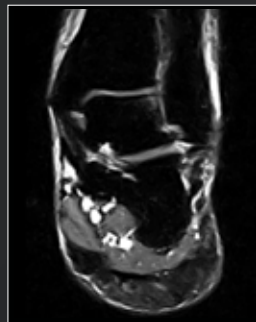
Hip SE T1 Coronal



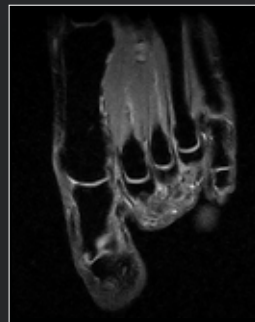
Hip 3D HYCE Axial



Ankle SE T1 Sagittal



Ankle FSTIR Coronal



Foot XBONE Coronal



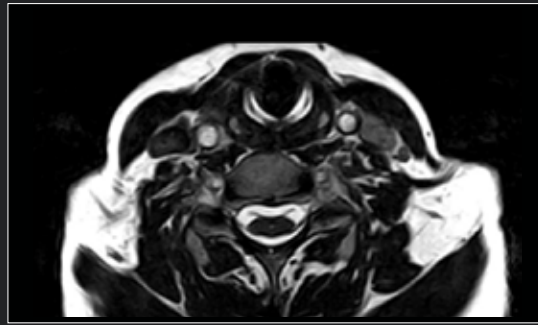
TMJ 3D SHARC Sagittal



Cervical Spine SE T1
Sagittal



Cervical Spine FSE T2
Sagittal



Cervical 3DHyce Axial



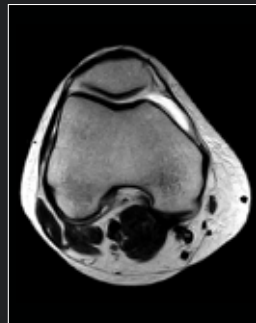
T- Spine FSE T2 Sagittal



Knee 3D SHARC Sagittal



Knee SPED Fat
suppression Coronal



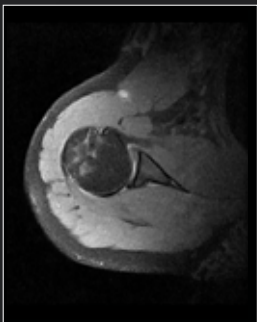
Knee FSE T2 Axial



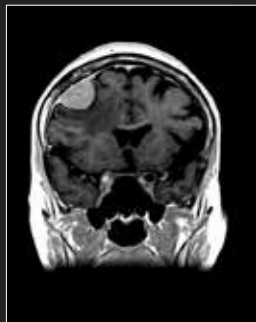
Shoulder SE T1 Coronal



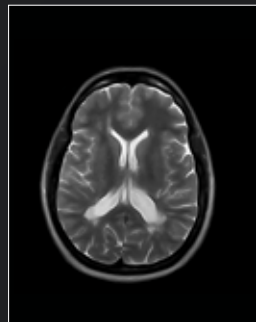
Shoulder 3D SHARC
Coronal



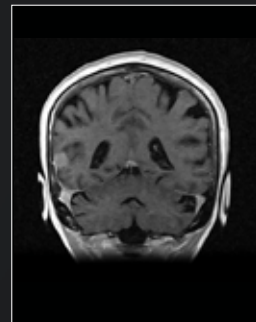
Shoulder SPED Fat
suppression Axial



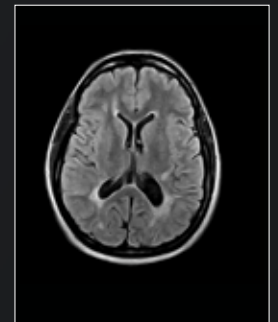
Head SET1 post contrast



Head FSE T2 Axial



Head 3D SST1 Coronal



Head FLAIR Axial

S-scan Open coils

S-scan Open comes with a complete set of RF coils to maximize sensitivity to the specific anatomies under exam. This ample selection of dedicated coils guarantees a high signal-to-noise ratio (SNR) with a great signal homogeneity providing exceptional spatial resolution.



Shoulder
(linear)



Knee
(DPA)



Hand, wrist
(DPA)



Ankle-foot
(DPA)



Shoulder
(DPA)



Shoulder*
(3 channels)



Cspine*
(linear)



XL L-Spine*
(2-channels)



Cspine*
(DPA)



Head*
(4-channels)



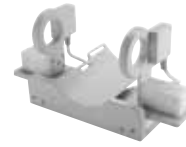
L-Spine, large size*
(4 channels)



L-Spine, small size*
(4 channels)



Flexible hip*
(linear)



TMJ*
(2-channels)



*Optional Coil

Open to customers for patient care



Examination workflow

New dedicated imaging protocols, from foot to shoulder, to cover all musculoskeletal anatomies. Included with optional coils, spine, and head protocols. **S-scan Open** guarantees fast examinations without comprising diagnostic quality.



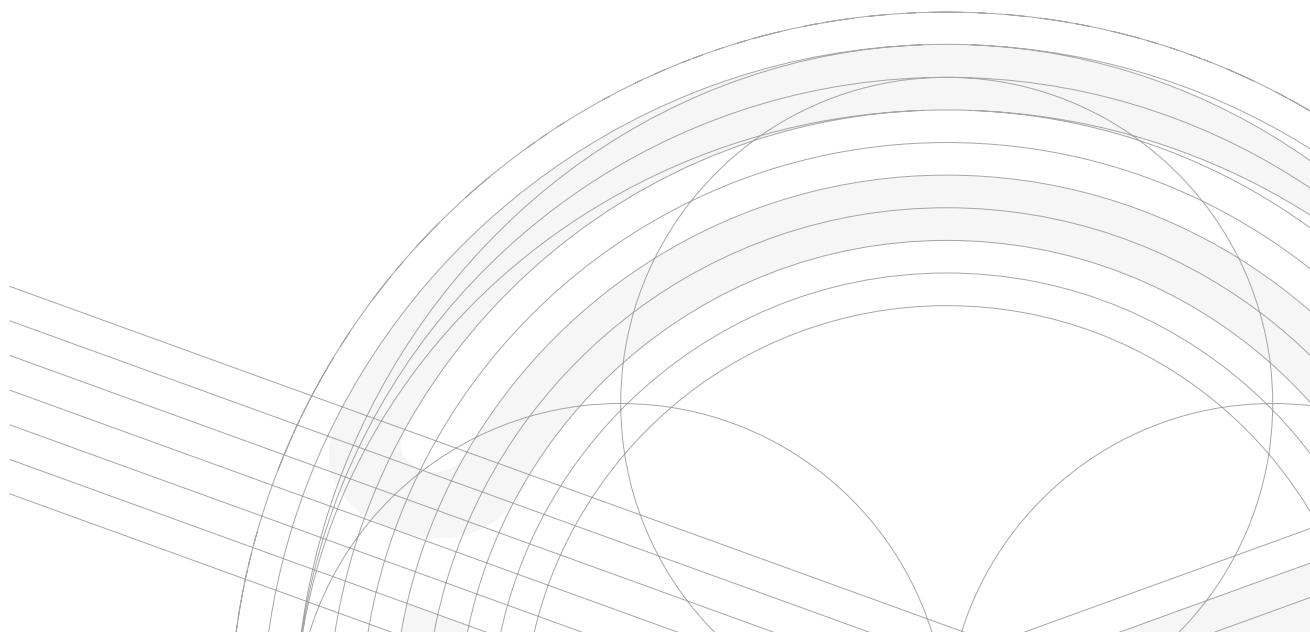
Ease of use

Esaote **S-scan Open** offers a User Interface up-to-date with the latest Microsoft Office™ standards to shorten the learning curve, focused on getting the work done without losing the flexibility to customize scans whenever needed.



Patient positioning

Open ergonomic system, coils in constant evolution, easy-access bed, real-time image display. **S-scan Open** is an enhanced system with the well-known Esaote, easy, fast, and comfortable patient positioning.



The heartbeat of care. The breath of sustainability.



Return on investment

S-scan Open has been developed in line with the Esaote MRI philosophy which means:

- Compact installation
- Easy operation
- Minimized total cost of ownership
- Dedicated service contracts.



Sustainable MRI

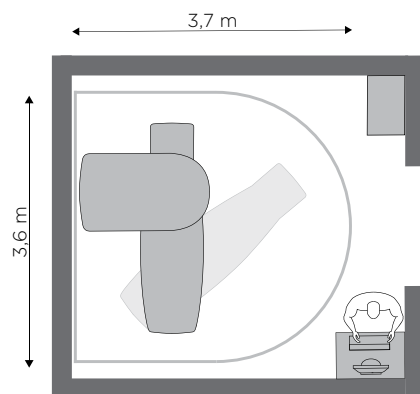
Low power consumption: drawing only 0.4kVA when the system is OFF:

- No cryogenics, no water cooling
- Not even a drop of helium.

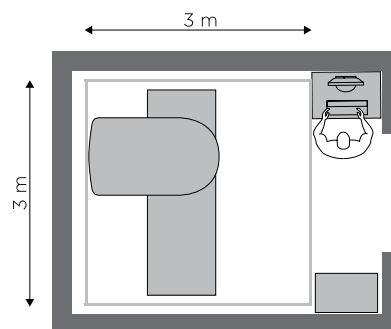


Customer friendly

One room MRI. Thanks to its smart design the magnet unit and RF shielding will fit in a space less of 20 m² (216 sq. ft.).



Standard bed and semi-circular RF cage



Compact bed and rectangular RF cage



*Cage is optional

Connectivity and Integration

S-scan Open includes complete networking and storage features to work either stand alone or as part of an integrated environment.



Data security

The system is in line with today's requirements for data security with automatic antivirus security updates.



Standalone operation

As a stand-alone scanner, **S-scan Open** comprises an integrated DVD storage and retrieve software package, printer output facility and a patient-CD package.



Network operation

S-scan Open is DICOM and IHE compliant and offers smart solutions for connectivity to your PACS and teleradiology.

System Life Cycle Protection



Remote service and customer care

All Esaote systems come with remote service capability. The remote service capability allows Esaote to react to any potential issue and to get you up and running faster!



Ready for the future

Esaote MRI systems are built for the future. **The MDR classification** of the system can keep up with technological advances to satisfy market needs, protecting customers' investments over the years.



Esaote MRI

One of the top 10 diagnostic imaging providers, respecting the highest quality standards in production and customer service processes.



Esaote headquarter in Italy.



160000457 Ver.02



Esaote S.p.A. - sole-shareholder company

Via Enrico Melen 77, 16152 Genova, ITALY, Tel. +39 010 6547 1, Fax +39 010 6547 275,
info@esaote.com www.esaote.com

Technology and features are device/configuration-dependent. Specifications subject to change without notice. Information might refer to products or modalities not yet approved in all countries. Product images are for illustrative purposes only. For further details, please contact your Esaote sales representative.

 Italian design 

Please visit us online
for more information

